



# Details on station bicycle rentals



Station	Rental location	Type	Bicycles available	Basic fee	Additional fee	Maximum daily charge	Out-of-towner discount	Information
1 Tottori Sta.	Parking area #2 (under the Tottori Station overpass) (1-2 minute walk from the north exit of Tottori Station)	Regular	12	¥500/day			Free	Tottori City Tourist Information Office ■ 111-1 Higashi Honji-cho, Tottori City (inside Tottori Station) ■ 0857-22-3318
		Electric assist	7	¥1,000/day			50%off	
2 Iwami Sta.	Iwami Tourist Association (in front of Iwami Station)	Regular	3	¥800/day			¥700 off basic fee	Iwami Tourist Association (in front of Iwami Station) ■ 783-8 Uradome, Iwami ■ 0857-72-3481
		Electric assist	14	¥1,500/day				
3 Hamasaka Sta.	Shinonsen Machiaruki Information Center (in front of Hamasaka Station)	Regular	3	¥500/day			Free	Shinonsen Machiaruki Information Center (in front of Hamasaka Station) ■ 2351-1 Hamasaka, Shinonsen ■ 0796-80-1126
		Electric assist	6	¥400/2hour	¥100/hour	¥800	Basic fee waived	
4 Kasumi Sta.	Kasumi Tourist Association (in front of Kasumi Station)	Regular	2	¥200/hour	¥100/hour	¥500	Free	Kasumi Tourist Association (in front of Kasumi Station) ■ 1-7 Nanukaichi Kasumi-ku, Kasumi ■ 0796-36-1234
		Electric assist	4	¥500/hour	¥100/hour	¥800	Basic fee waived	
5 Takeno Sta.	Takeno Tourist Association	Electric assist	6	¥500/2hour	¥100/hour	¥1,000	Basic fee waived	Takeno Tourist Association ■ 17-22 Takeno, Takeno-cho, Toyooka ■ 0796-47-1080 Note: The Takeno Tourist Association is about 1.5 km from the station. Bicycles can also be rented at Takeno Station.
6 Kinosaki-onsen Sta.	Kinosaki Onsen Tourist Association (in front of Kinosaki Onsen Station)	Regular	7	¥500/2hour	¥200/hour	¥1,000	Basic fee waived	Kinosaki Onsen Ryokan Cooperative ■ 78 Yushima Kinosaki-cho, Toyooka ■ 0796-32-4141
		Regular (Michelin)	2	¥600/2hour	¥200/hour	¥1,200	¥500 off basic fee	
		Electric assist	20	¥600/2hour	¥200/hour	¥1,200		
		Sozoro Tourist Information Center at Kinosaki Onsen	Regular (Michelin)	4	¥500/2hour	¥200/hour	¥1,000	Basic fee waived
7 Toyooka Sta.	Toyooka Tourist Association	Regular	4	¥500/day			¥400 off basic fee	Toyooka Tourist Association ■ 3-2 Otemachi, Toyooka ■ 0796-22-8111
	Toyobra Machinaka Station	Regular (Michelin)	4					Toyobra Machinaka Station (located on Kaban Street, about a 15-minute walk from the station)
8 Takeda Sta.	YADOYA TENKU (about a two-minute walk from the station)	Regular	4	¥200/hour ¥500/half day		¥1,000	Maximum discount ¥400	YADOYA TENKU ■ 220 Takeda, Wadayama-cho, Asago ■ 079-666-8836
9 Ikuno Sta.	Ikuno Tourist Association (inside Ikuno Station at the west exit)	Regular	3	¥500/day			¥300 off basic fee	Ikuno Tourist Association ■ 229-5 Kuchiganaya, Ikuno-cho, Asago (inside JR Ikuno Station) ■ 079-679-2222
		Electric assist	2	¥1,000/day				

## How to participate

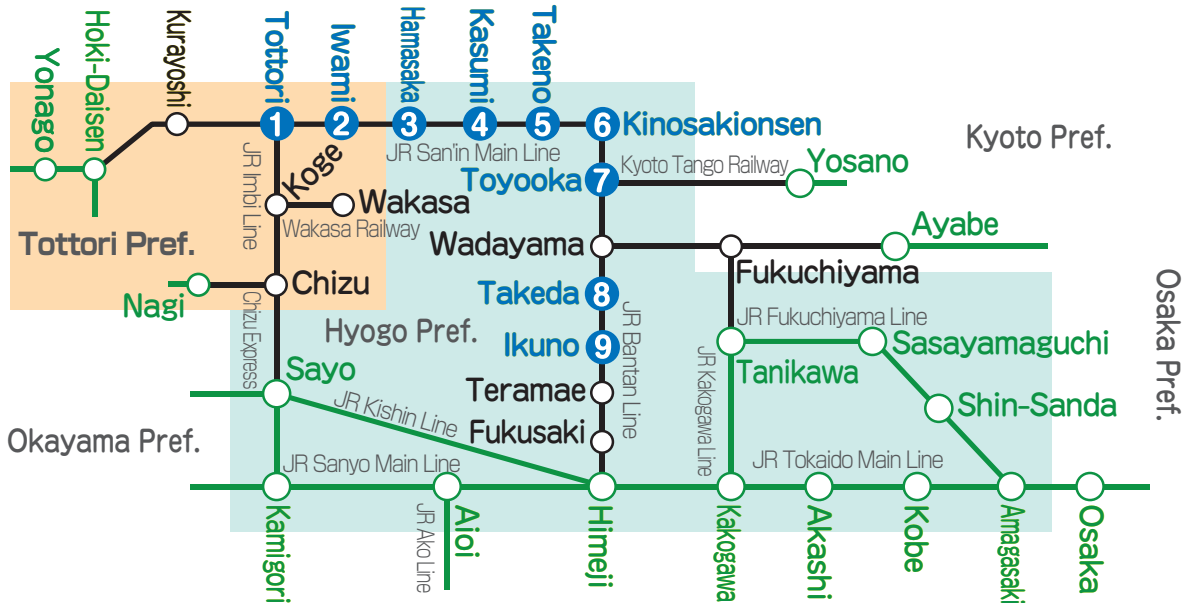
- 1 Present a train ticket showing you came from out of town on a JR train line between Jul. 23 and Nov. 30, 2022
- 2 Fill out the survey
- 3 Get your out-of-towner discount
- 4 Head out to see the sights on your bicycle!

- You may also present an unused return ticket, Seishun 18 ticket, or other ticket for future travel
- Each ticket is valid for a one-time discount

※ Available when traveling from out-of-town stations

- Hoki-Daisen Station
- Nagi Station
- Sayo Station
- Himeji Station
- Tanigawa Station
- Ayabe Station
- Yosano Station

Please show your ticket from station further away.



Available

2022.7.23

▶ 11.30

Go by Train!

# San'in Coast

# Let's go cycling!

~ravel by train and bicycle!~

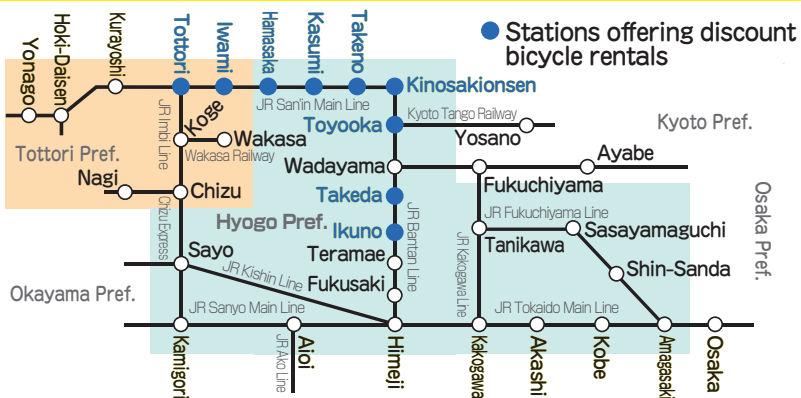
You could be eligible for a station bicycle rental!

Present a train ticket showing you came from out of town!

## Free!

Note: Free rentals may not be available at certain times

## Get a bicycle rental discount at nine train stations!



## We're taking steps to stop the spread of COVID-19

There may be modifications to certain facilities and events. Please check before you head out.

First-come, First-served

Note: Discounts are limited and available on a first-come, first-served basis. Discounts may not be available for the full

See back for details▶

Sponsored by

Regional Transportation and Tourism Alliance for Tajima (Hyogo Prefecture) and Eastern Tottori Prefecture Alliance for Promoting a Double-track/Electrified San'in Main Line and Fukuchiyama Line Tajima Regional Railway Convenience Improvement Council



## 1 Tottori Sta.



**Tottori Sand Dunes** ▶ Head northeast 7 km

Japan's largest desert. You can take a tour on camelback. (fee required)

**Hakuto Coast** ▶ Head west 12 km

A beautiful coast with white sand beaches. In 2010, it was designated as "a mecca for lovers".



#Tottori Sand Dunes

**+Enjoy plenty on a great sightseeing bus!**

**Yume Tajima Tour Bus**

**Tajimawaru**

Runs on Saturdays, Sundays, and public holidays

- This sightseeing bus links the Tajima public transportation system to tourist highlights in the area
- There are a total of six routes, each with onboard tourist information
- There's a special service available July - September.

¥ Day pass: ¥500 for adults and ¥250 for children

TEL 0796-26-3686 ? Tajima Tourist Association (located inside Tajima, Hyogo Citizen's Hall)



**Tottori City ¥100 Circular Bus**

**Kururi** There are 3 courses.

Take this bus to explore Tottori City!

There are three bus routes: red, blue, and green. All three take you around to key sightseeing spots, including shopping centers and the Tottori Castle ruins.

Runs daily (except for New Year's Day)

¥ ¥100 (Day pass: ¥200)

TEL 0857-22-8111 ? Tottori City Transport Policy Department



**Tottori sightseeing tour bus**  
**Loop Kirin-jishi Bus**

If you're heading out to the Tottori Sand Dunes and Tottori Port...

This bus is a fun and easy way to see the sights of Tottori, and will make your travels in Tottori far more enjoyable. Discounted day passes are available. They're a good deal!

Runs on: Saturdays, Sundays, and public holidays, Obon holiday (August 13th - 15th) \*Closed on New Year's Day

¥ ¥300 for adults and ¥150 for children (Day pass: ¥600)

TEL 0857-22-3318 ? Tottori City Tourist Information Office



## 2 Iwami Sta.



**Nagisa Exchange Center** ▶ Head north 3 km

Closed Mondays (or the following day when Monday is a public holiday)

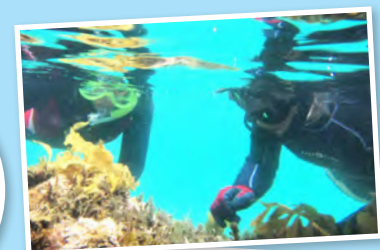
9:00~17:00 TEL 0857-73-0118

The Uradome Coast offers snorkeling, sea kayaking, and a host of other fun adventures (Fee required).

**Uradome Coast Island Boat Tour** ▶ Head west 5 km

9:30~15:30 TEL 0857-73-1212 ¥ Fee required

View the scenery of Uradome Coast. The contrast between the rough cliffs, white sand, and green pines is beautiful.



#Nagisa Exchange Center Snorkeling & Sea Kayaking

## 3 Hamasaka Sta.



**Shiroyama Park** ▶ Head west 1.5 km

Overlook Moroyose Port which once prospered as a port in the Edo period. The sun setting into the sea at Moroyose is stunning.

**San'in Kaigan Geopark Center** ▶ Head north 1 km

Closed Tuesdays 9:00~17:00 TEL 0796-82-5222 ¥ Free

See exhibits of the various types of rocks found in the geopark, including basalt, andesite, and tuff. Here you can learn all about the geopark from a variety of angles.

## 4 Kasumi Sta.



**Daijo Temple** ▶ Head south 2 km

9:00~16:00 ¥ Fee required

Also known as Okyo-dera, this temple features fusuma panels by the mid-Edo painter Maruyama Okyo and his family, along with other attractions.

**Kaeru Island**

▶ Head east 4 km

There's a large interesting rock shaped like a frog. A great spot for taking



#Kaeru Island

## 5 Takeno Sta.



**Takeno Beach** ▶ Head north 1.5 km

TEL 0796-47-1080 (Takeno Tourist Association)

A beautiful beach that is great for swimming. A continuous stretch of nearly a kilometer of white sand beach.

**Hasakari Rock** ▶ Head west 2 km

This natural wonder features a round rock trapped between two taller rocks. People say it was formed when the ceiling collapsed at the mouth of a cave.



#Takeno Beach



#Hasakari Rock

## 6 Kinokuni Sta.



**Genbu Cave Park** ▶ Head southeast 4 km

Rare geographical features formed by volcanic activity. One of Japan's national natural monuments. \*Fees apply as of August 1st

**Kinosakionsen**

There are 7 hot springs each with its own style. Walk through the unique town and enjoy the river, willows, and cherry blossoms.



#Genbu Cave Park

#Kinosaki onsen

## 7 Toyooka Sta.



**Oriental White Stork Park and Museum** ▶ Head east 5 km

Monday (or the following day when Monday is a public holiday)

9:00~17:00 TEL 0796-23-7750 ¥ Free

Here you can catch a glimpse of the oriental white stork, treasured as a special natural monument of Japan.

**Kaban Street** ▶ Head east 1 km

Browse the many shops for Toyooka kabans (bags) made from carefully selected materials. These bags have been loved by all for over a thousand years.



#Kaban Street

## 8 Takeda Sta.



Note: Please take the open-air bus to the Takeda Castle Ruins

**Takeda townscape and Teramachi Street** ▶ 1 km

Feel the historical atmosphere in the town located at the base of the Takeda Castle ruins.

**Chasuri-yama Tumulus Park and Library** ▶ Head northeast 4 km

Monday 9:00~17:00 ¥ Free

There is an ancient tomb. The view is spectacular.



#Townscape of Takeda



#Chasuri-yama Tumulus Park and Library

## 9 Ikuno Sta.



**Ikuno Silver Mine** ▶ Head east 4 km

9:10~17:20 TEL 079-679-2010

¥ Fee required

(Times shown are for April through October and differ during other seasons. Please enter the sightseeing pathway at least 40 minutes prior to close.)

One of Japan's biggest and famous silver mines and has a history of some 1200 years. Admission into the mine is until 16:40.

**Ikuno Kozancho scenery and townscape** ▶ 1 km

You can also see the Ikuno Kozancho scenery and townscape. It's an important cultural landscape of Japan.



#Ikuno Silver Mine



#The remains of trolley track along the Ickawa River

